



**REGIONAL SPECIALISED METEOROLOGICAL CENTRE-TROPICAL CYCLONES, NEW DELHI**  
**TROPICAL WEATHER OUTLOOK**

**DEMS-RSMC TROPICAL CYCLONES NEW DELHI DATED 04.01.2024**

**TROPICAL WEATHER OUTLOOK FOR NORTH INDIAN OCEAN (THE BAY OF BENGAL AND THE ARABIAN SEA) VALID FOR NEXT 168 HOURS ISSUED AT 0600 UTC OF 04.01.2024 BASED ON 0300 UTC OF 04.01.2024.**

**BAY OF BENGAL:**

YESTERDAY'S CYCLONIC CIRCULATION OVER SOUTHWEST BAY OF BENGAL OFF SOUTH SRILANKA COAST EXTENDING UPTO 5.8 KM ABOVE MEAN SEA LEVEL HAS BECOME LESS MARKED AT 0300UTC OF TODAY 4<sup>TH</sup> JANUARY, 2024.

SCATTERED LOW AND MEDIUM CLOUDS WITH EMBEDDED MODERATE TO INTENSE CONVECTION LAY OVER SOUTH BAY OF BENGAL SOUTH OF LATITUDE 10.0N ADJOINING EQUATORIAL INDIAN OCEAN. SCATTERED LOW AND MEDIUM CLOUDS WITH EMBEDDED ISOLATED WEAK CONVECTION LAY OVER EASTCENTRAL BAY OF BENGAL & ANDAMAN SEA.

**\*PROBABILITY OF CYCLOGENESIS (FORMATION OF DEPRESSION) DURING NEXT 168 HRS:**

| 24 HOURS | 24-48 HOURS | 48-72 HOURS | 72-96 HOURS | 96-120 HOURS | 120-144 HOURS | 144-168 HOURS |
|----------|-------------|-------------|-------------|--------------|---------------|---------------|
| NIL      | NIL         | NIL         | NIL         | NIL          | NIL           | NIL           |

\*NOTE: EVERY 24HR FORECAST IS VALID UPTO 0300 UTC (0830 IST) OF NEXT DAY

**ARABIAN SEA:**

YESTERDAY'S LOW PRESSURE AREA OVER SOUTHEAST ARABIAN SEA HAS BECOME LESS MARKED AT 0300UTC OF TODAY, 4<sup>TH</sup> JANUARY, 2024. HOWEVER, THE ASSOCIATED CYCLONIC CIRCULATION LAY OVER SOUTHEAST ARABIAN SEA & ADJOINING LAKSHADWEEP AREA AND EXTENDED UPTO 3.1 KM ABOVE MEAN SEA LEVEL AT 0300UTC OF TODAY, THE 4<sup>TH</sup> JANUARY, 2024. THE SOUTHWEST-NORTHEAST ORIENTED TROUGH RUN FROM THE CENTER OF CYCLONIC CIRCULATION TO SOUTH KARNATAKA AND EXTENDED UPTO 1.5 KM ABOVE MEAN SEA LEVEL.

SCATTERED LOW AND MEDIUM CLOUDS WITH EMBEDDED INTENSE TO VERY INTENSE CONVECTION LAY OVER SOUTHEAST ADJOINING SOUTHWEST ARABIAN SEA, LAKSHADWEEP ISLAND AREA & MALDIVES AREA.

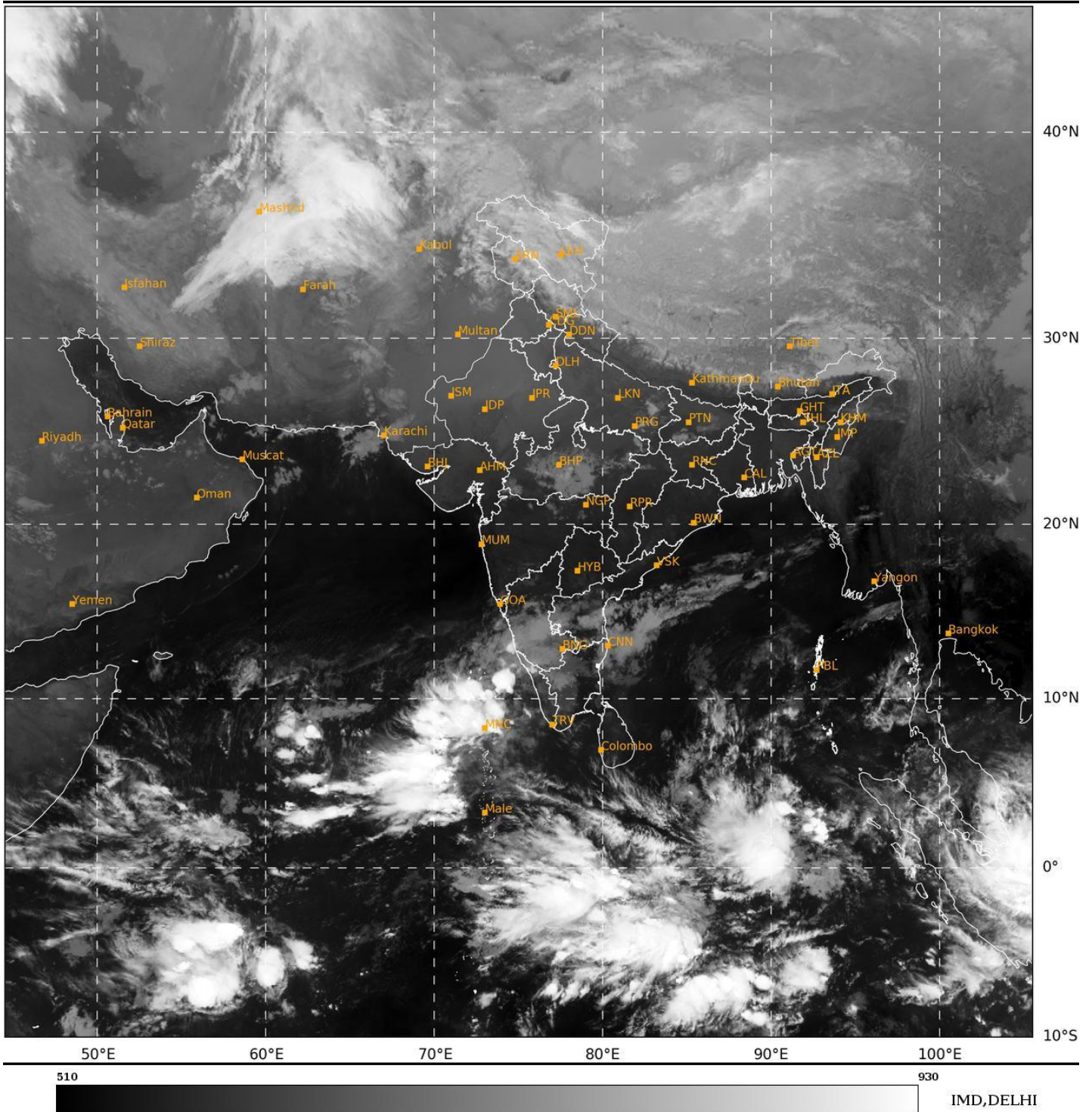
**\*PROBABILITY OF CYCLOGENESIS (FORMATION OF DEPRESSION) DURING NEXT 168 HRS:**

| 24 HOURS | 24-48 HOURS | 48-72 HOURS | 72-96 HOURS | 96-120 HOURS | 120-144 HOURS | 144-168 HOURS |
|----------|-------------|-------------|-------------|--------------|---------------|---------------|
| NIL      | NIL         | NIL         | NIL         | NIL          | NIL           | NIL           |

\*NOTE: EVERY 24HR FORECAST IS VALID UPTO 0300 UTC (0830 IST) OF NEXT DAY

SAT : INSAT-3D IMG  
IMG\_TIR1 10.8 um  
L1C Mercator

04-01-2024/(0300 to 0326) GMT  
04-01-2024/(0830 to 0856) IST



Cloud distribution: (a) Isolated: <25%, Scattered:25-50%, Broken: 51-75%, Solid:>75%, Convection Intensity: (a) Weak: Cloud Top Temperature (CTT) >-25°C, (b) Moderate: CTT: - 25°C to -40°C, (c) Intense: CTT: - 41°C to -70°C and (d) Very Intense: : Less than -70°C  
PROBABILITY OF CYCLOGENESIS (FORMATION OF DEPRESSION):NIL: 0%, LOW: 1-33%, , MODERATE: 34-66% AND HIGH: 67-100%  
This is a guidance Bulletin for WMO/ESCAP Panel Member countries. Visit respective National websites for Country specific Bulletins